

Bluetooth headset for phone calls VMX 200



Instruction manual

Contents

Important safety information	2
The VMX 200 Bluetooth headset	4
Delivery includes	5
Product overview	6
Putting the VMX 200 into operation	9
Charging the headset battery	9
Connecting the VMX 200 to a Bluetooth device	10
Using the VMX 200 with two Bluetooth devices	11
Using the VMX 200	12
Individually adjusting the VMX 200 and wearing it	12
Switching the VMX 200 on/off	14
Changing the speaker volume	15
Making calls using the VMX 200	16
Cleaning and maintaining the VMX 200	19
If a problem occurs	20
Restoring factory default settings (Reset)	20
If you are out of the Bluetooth transmission range	21
Specifications	22
Manufacturer Declarations	23

Important safety information

- ▶ Please read this instruction manual carefully and completely before using the product.
- ▶ Make this instruction manual easily accessible to all users at all times. Always include this instruction manual when passing the product on to third parties.

Preventing health problems

- ▶ Before using the product, set the volume to a low level. To protect your hearing, avoid listening at high volume levels for long periods of time.
- ▶ Do not use the product in situations which require special attention (e.g. in traffic or when performing skilled jobs).
- ▶ Keep the product and accessories out of reach of children who could swallow smaller pieces.

The product generates stronger permanent magnetic fields that could cause interference with cardiac pacemakers and implanted defibrillators (ICDs).

- ▶ Always maintain a distance of at least 3.94" (10 cm) between the ear cup housing and the cardiac pacemaker or implanted defibrillator.

Preventing damage to the product

- ▶ Always keep the product dry and do not expose it to extreme temperatures (normal operating temperatures: 10°C/50°F to 40°C/104°F).
- ▶ Use the product with care and store it in a clean, dust-free environment.
- ▶ Only use the product in aircraft where wireless **Bluetooth®** transmission is permitted.

Intended use

The VMX 200 is an accessory for mobile phones or any **Bluetooth** compliant device with a "hands free profile" (HFP) or a "headset profile" (HSP). It is intended for wireless communication via **Bluetooth** connection in dry environments.

It is considered improper use when the VMX 200 is used

- for any application not named in this instruction manual,
- under operating conditions that deviate from those described in this instruction manual.

Safety instructions for rechargeable batteries






If abused or misused, rechargeable batteries may leak. In extreme cases, a rechargeable battery may even present



WARNING

- a heat hazard,
- a fire hazard,
- an explosion hazard,
- a smoke and gas hazard.

Please understand that Sennheiser Communications does not accept liability for damage arising from abuse or misuse.

	Only charge the rechargeable batteries with the appropriate Sennheiser charger.		Switch rechargeable battery-powered products off after use.
	Only charge the rechargeable batteries at ambient temperatures between 10°C/50°F and 40°C/104°F.		When not using rechargeable batteries for extended periods of time, charge them regularly.
	Do not charge the rechargeable batteries if the product is obviously defective.		

The VMX 200 Bluetooth headset

The stylish new VMX 200 **Bluetooth** headset is the wireless solution for phone calls with superb sound quality. It features VoiceMax Dual Microphone technology that filters away background noise and enhances your voice, thus providing crystal clear speech.

Bluetooth



The VMX 200 complies with the new **Bluetooth** 3.0 standard and is compatible with all **Bluetooth** 1.1, 1.2, 2.0 and 2.1 devices with a “hands free profile” (HFP) or a “headset profile” (HSP). The VMX 200 provides wireless freedom to give hands-free convenience with your mobile phone.

Additional features of the VMX 200 Bluetooth headset

- VoiceMax Dual Microphone technology – two microphones work in synergy; one to emphasize your voice, the other to remove noise
- Easy call control – control calls and adjust the volume to suit you best with just one hand
- Lightweight comfort – weighs only 10 grams
- Flexible wearing style – wear left or right, use with or without ear hook
- Long talk time – talk to business partners and friends for up to 6 hours, with up to 10 days of standby time

Delivery includes



VMX 200 mono **Bluetooth** headset
with built-in rechargeable Lithium-Polymer battery



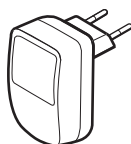
Ear hook



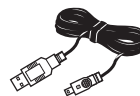
Ear adapter without loop



Ear adapters with loop (S, M, L)



VMX 200 power supply unit (EU/UK/US/AUS version)



Charging cable



Quick Guide



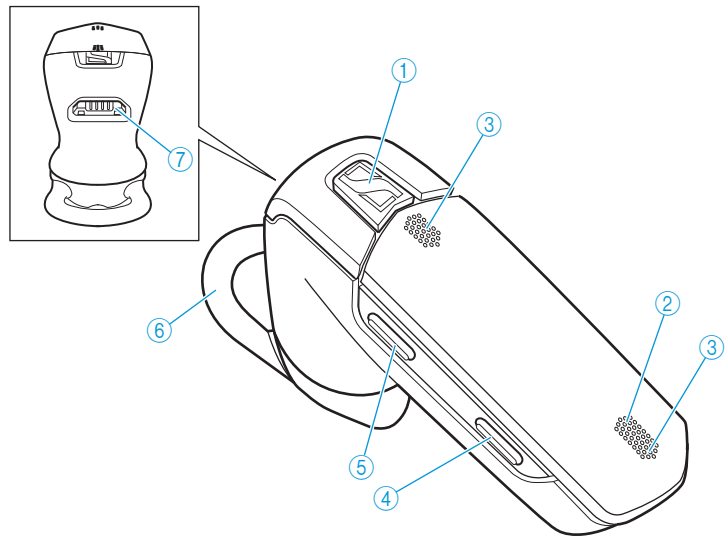
Safety Guide



A list of accessories can be found on the VMX 200 product page at www.senncom.com. For information on suppliers, contact your local Sennheiser partner: www.senncom.com > "Sales Partner"

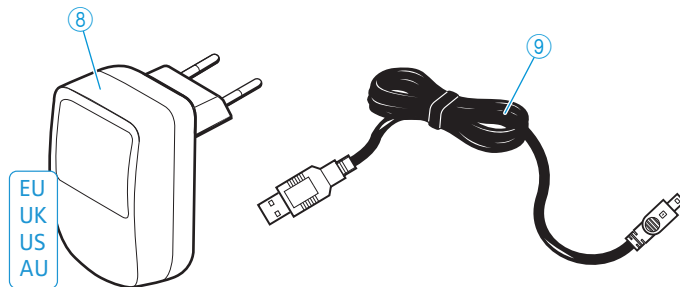
Product overview

VMX 200 headset



- ① Multi-function button
- ② LED
- ③ Microphone
- ④ Volume down button
- ⑤ Volume up button
- ⑥ Ear adapter with loop
- ⑦ USB socket




VMX 200 power supply unit






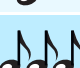


- ⑧ VMX 200 power supply unit (EU/UK/US/AUS version)
- ⑨ Charging cable

Overview of pictograms




Meaning of the pictograms for pressing a button

Pictogram	Meaning
	Briefly press this button.
	Double-press this button.
	Keep this button pressed for 5 seconds.


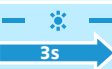

Meaning of the pictograms for the beeps

Pictogram	Meaning
	Ascending sequence of beeps
	Descending sequence of beeps
	One beep
	Several beeps
	Two descending beeps
	Two ascending beeps

Meaning of the pictograms for the flashing of the LED

Pictogram	Meaning
	This pictogram symbolizes a flashing.
	This pictogram symbolizes an interruption.
	This pictogram symbolizes a time interval.

Examples of some of the pictograms that are used throughout this instruction manual:

Pictogram	Meaning
	The LED flashes rapidly.
	The LED flashes once every 3 seconds.
	The LED flashes 3 times per second.

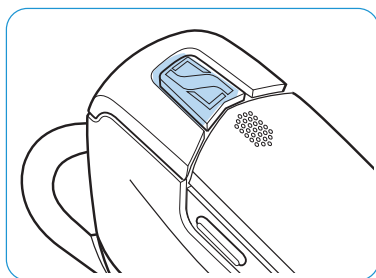
The pictogram “i”



Notes marked with the pictogram “i” provide important information on the use of the headset.

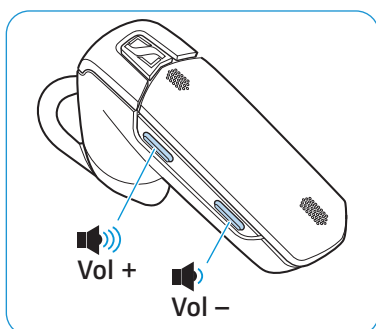
Overview of buttons

Multi-function button



Press the button	Function	Page
	Accepts a call	16
	Ends a call	16
	Transfers a call from the mobile phone to the headset	16
	Accepts an incoming call and ends the active call (managing two calls)	17
	Ends the active call and makes the call on hold active (managing two calls)	17
	Stops redialing	17
	Voice dialing	18
	Stops voice dialing	18
	Rejects a call	16
	Rejects the incoming call and continues the active call (managing two calls)	17
	Redials the last number	17
	Establishes a conference call (managing two calls)	17
	Accepts an incoming call and puts the active call on hold (managing two calls)	17
	Toggles between two calls (managing two calls)	17
	Switches the headset on	14
	Switches the headset off	14
	Changes to pairing mode	10

Volume buttons



Button	Duration	Function	Page
 Vol -		Mutes the headset microphone	18
 Vol + Vol -		Resets the headset to the factory default settings	20

Putting the VMX 200 into operation

Charging the headset battery

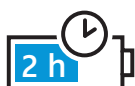


WARNING

Danger of injury!

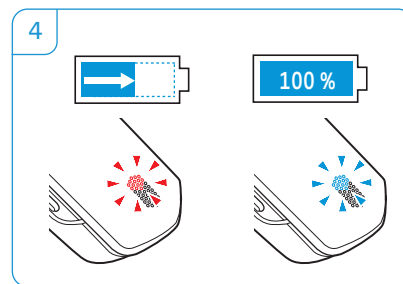
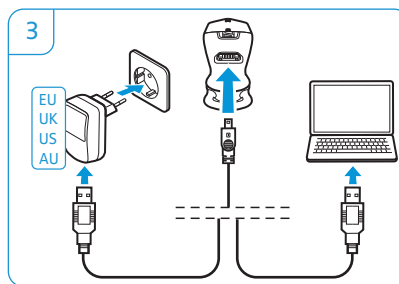
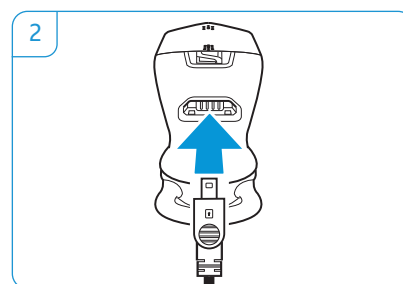
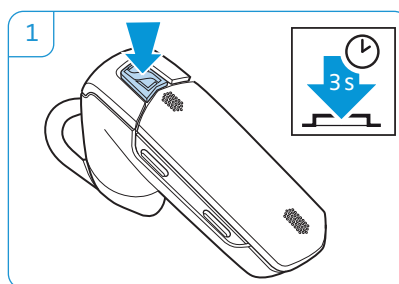
Wearing the headset when charging can cause burns and injuries.

► Do not wear the headset when charging.



Before using the headset for the first time, charge the rechargeable battery for at least 2.5 hours. Later, 2 hours will suffice to fully charge the battery. A fully charged battery provides a talk time of approx 6 hours.

- 1 Take off the headset and switch it off (see page 14).
- 2 Connect the smaller plug of the charging cable to the USB socket of the VMX 200.
- 3 Connect the USB plug of the charging cable to the USB socket of the power supply unit or your computer.
- 4 The battery is being charged and all active connections are interrupted. The LED lights up red. When charging is complete, the LED flashes blue once every 5 seconds.



When the battery level drops below 10 minutes of talk time, the LED flashes red and you hear a low battery warning every 20 seconds. The headset automatically switches off after the battery has dropped below the minimum level.

Connecting the VMX 200 to a Bluetooth device

CAUTION

Danger of malfunction!

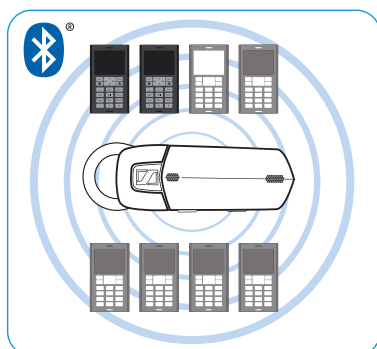
The transmitted radio waves of mobile phones can impair the operation of sensitive and unprotected devices.

- ▶ Only make calls with the headset in locations and aircraft where wireless **Bluetooth** transmission is permitted.

The headset complies with the **Bluetooth** 3.0 standard. In order that data can be transmitted wirelessly using **Bluetooth** technology, you have to pair your headset with **Bluetooth** devices that support the "hands free profile" (HFP) or "headset profile" (HSP).

The headset can save the connection profiles of up to eight **Bluetooth** devices with which it has been paired. After switch-on, the headset automatically tries to connect to the two last connected devices.

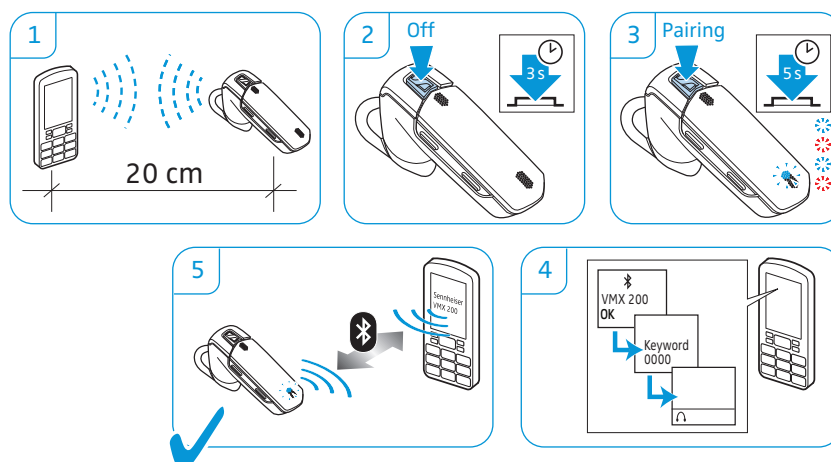
If you pair the headset with a ninth **Bluetooth** device, the saved connection profile of the first **Bluetooth** device will be overwritten. If you want to re-establish a connection with the first **Bluetooth** device, you have to pair the headset again.



Pairing the VMX 200 with a Bluetooth device

The following chapter describes, by way of example of a mobile phone, how to pair the VMX 200 with a **Bluetooth** device.

- 1 Make sure that
 - the headset's battery is fully charged (see page 9),
 - the mobile phone's **Bluetooth** visibility is enabled (see the instruction manual of the corresponding **Bluetooth** device),
 - the headset is placed close to the mobile phone (approx. 20 cm or 7").
- 2 Switch the headset off (see page 14).
- 3 Press and hold the multi-function button for 5 seconds. You hear an ascending beep in the headset and the LED flashes alternately blue and red, indicating that the headset is in pairing mode.
- 4 Once the VMX 200 has found the mobile phone, the devices exchange device identification information. Select "Sennheiser VMX 200" on your mobile phone. If necessary, enter the default PIN code "0000".
- 5 The devices have identified each other and the headset is paired with the mobile phone. "Sennheiser VMX 200" appears on the display of the mobile phone, the LED flashes slowly blue.



If pairing is not successful within 5 minutes, the headset automatically returns to searching mode. If the headset has been paired before, it will try to connect to the last connected device after 5 minutes.

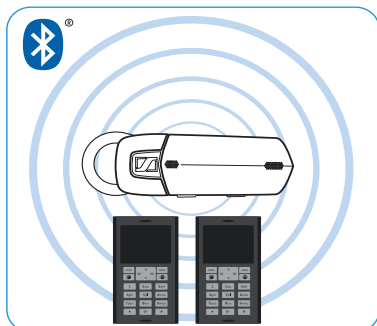
- ▶ On the mobile phone, start a search for **Bluetooth** devices (see the instruction manual of your mobile phone) and follow the instructions on the mobile phone's display.

Using the VMX 200 with two Bluetooth devices

You can use the VMX 200 simultaneously with two connected **Bluetooth** devices (Multi Connection).

In order for this to function, at least two **Bluetooth** devices must already be paired with the headset. To do so, follow the instructions in the preceding chapter "Pairing the VMX 200 with a **Bluetooth** device".

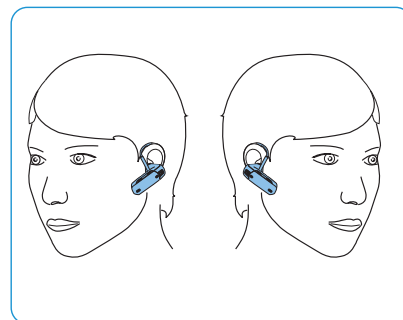
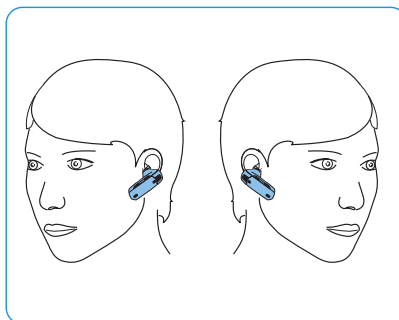
- ▶ Switch the headset on. The headset automatically tries to establish a **Bluetooth** connection to the two last connected **Bluetooth** devices.



Using the VMX 200

Individually adjusting the VMX 200 and wearing it

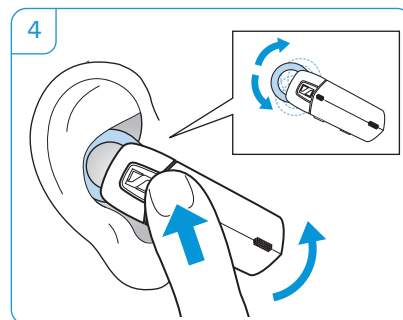
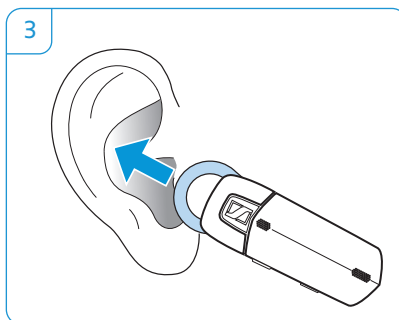
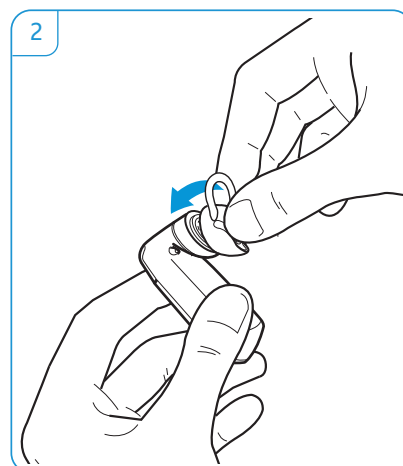
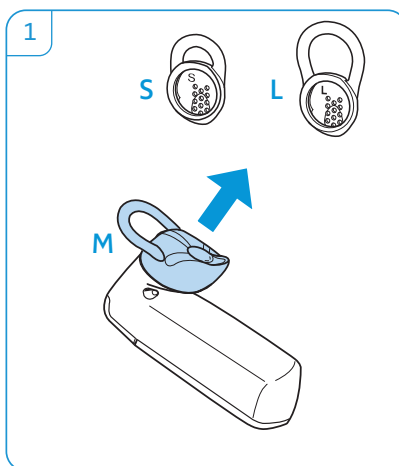
For an optimized and individual wearing comfort, the VMX 200 can be worn on your left or right ear in two different ways, i.e. with or without the ear hook.



Wearing the VMX 200 with ear adapter

The ear adapter with loop is supplied in 3 different sizes: S, M, L. Size M is pre-installed. Select the size that fits your ear.

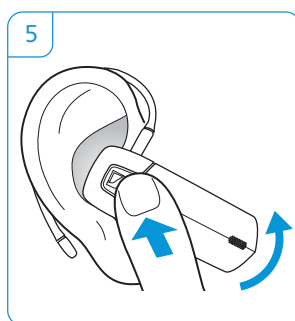
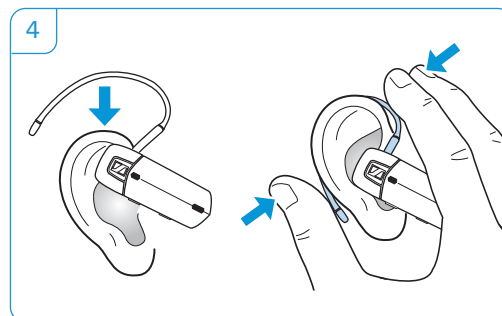
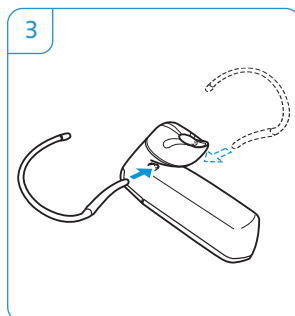
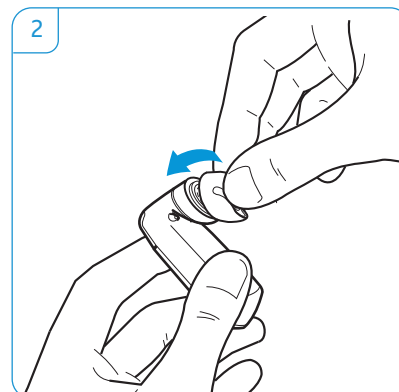
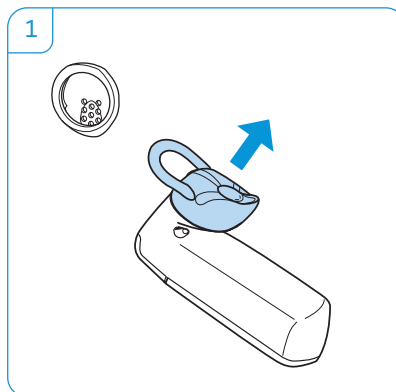
- 1 If the pre-installed ear adapter with loop is not the right size, remove it from the headset.
- 2 Attach the selected ear adapter with loop to the headset.
- 3 Move the headset to your ear and insert the loop of the ear adapter.
- 4 Adjust the angle of the loop so that the headset fits comfortably and securely in your ear.



Wearing the VMX 200 using the ear hook

If you prefer using the ear hook, always wear it in combination with the ear adapter without loop to ensure optimum wearing comfort.

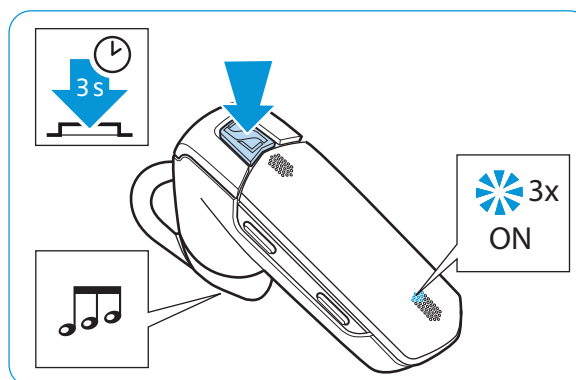
- 1 Remove the pre-installed ear adapter with loop.
- 2 Attach the ear adapter without loop to the headset.
- 3 Attach the ear hook to the VMX 200. If you want to change the wearing ear of the headset, attach the ear hook the other way round.
- 4 Move the headset to your ear and guide the ear hook behind your ear.
- 5 Position the headset so that it fits comfortably.



Switching the VMX 200 on/off

Switching the headset on

- Press and hold the multi-function button until the LED flashes blue 3 times. You hear an ascending sequence of beeps in the headset.



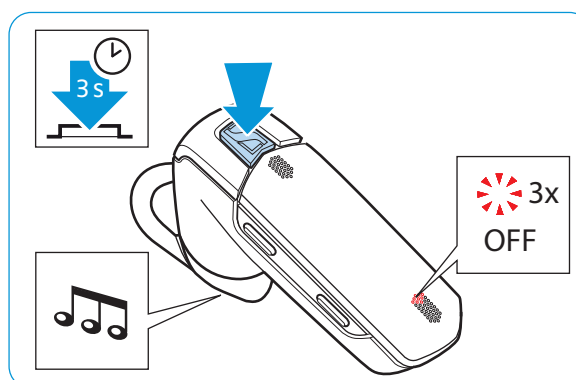
The LED then indicates the current operating mode.

LED flashes	Meaning
— * — 2s	Searching mode: The headset automatically tries to connect to the two last connected Bluetooth devices.
— * — * — 2s	Pairing mode: The headset establishes a connection to a Bluetooth device.
* — * — * — 1s	Incoming call: The mobile phone transfers the call to the headset.
— * — * — 1s	Active call: The headset is just being used for an active call.

Switching the headset off

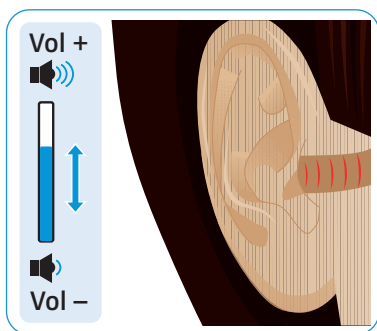
If the headset has not been used for more than 1 hour, it automatically switches off to conserve battery power.

- Press the multi-function button for 3 seconds. You hear a descending sequence of beeps in the headset and the LED flashes red 3 times. The headset switches off and the call is transferred to the **Bluetooth** device.



i Connection profiles and volume settings are saved automatically when the headset is switched off.

Changing the speaker volume



WARNING

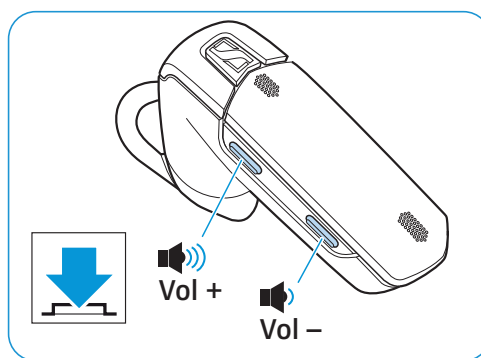
Hearing damage due to high volumes!

Listening at high volume levels for long periods can lead to permanent hearing defects.

- ▶ Set the volume to a low level before putting on the headset.
- ▶ Do not continuously expose yourself to high volumes.

- ▶ Press the
 - volume up button to increase the volume.
 - volume down button to reduce the volume.

When the minimum or maximum volume is reached, you hear a beep in the headset.



Making calls using the VMX 200



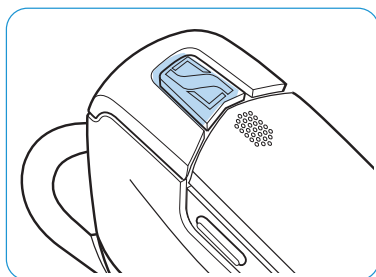
When your VMX 200 is connected to a mobile phone and you receive a call, you hear a ring tone in the headset and the LED flashes blue 4 times per second.

Managing one call

- ▶ Dial the number on your mobile phone.

If your mobile phone automatically transfers the call to the headset, you hear a beep in the headset. If your mobile phone does not automatically transfer the call to the headset, you have to press a button on your mobile phone to transfer the call (see the instruction manual of your mobile phone).

- ▶ Press the multi-function button:



Duration	Function		Beep(s)
		Accepts a call	–
		Rejects a call	
		Ends a call	
		Transfers an active call from the mobile phone to the headset	

Managing two calls

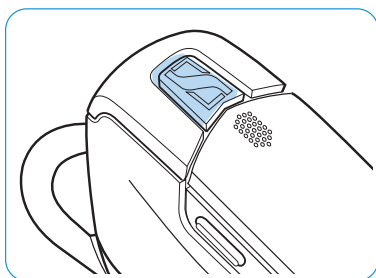
You can manage two calls:

- from **either two Bluetooth** devices or
- from **one Bluetooth** device.

If you want to manage two calls from one **Bluetooth** device, disconnect the second **Bluetooth** device.

If you receive a call during an active call:

► Press the multi-function button:



Duration	Active call	2nd incoming call	Function
			Accepts the incoming call and ends the active call
			Rejects the incoming call and continues the active call
			Accepts the incoming call and puts an active call on hold (toggling – phone dependent)



If you put an active call on hold (toggling):

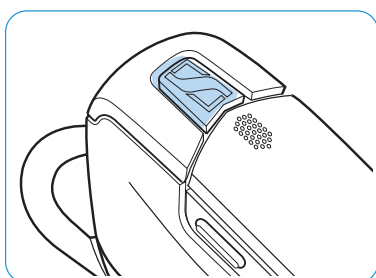
► Press the multi-function button again:







Duration	Active call	2nd call put on hold	Function
			Ends the active call and makes the call on hold active (phone dependent)
			Toggles between two calls (phone dependent)
			Establishes a conference call (for 2 calls on one Bluetooth device only)

Redialing

The redialing function must be supported by your mobile phone or **Bluetooth** device (with HF profile respectively) and be activated.

► Press the multi-function button:

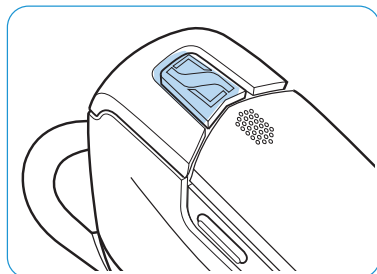


Duration	Function		Beep(s)
		Redials the last number	
		Stops redialing	

Voice dialing

The voice dialing function must be supported by your mobile phone (with HF profile) and be activated. Follow the instructions in the instruction manual of your mobile phone.

- ▶ Press the multi-function button on the headset to activate the voice dialing function.



Duration	Function		Beep(s)
		Voice dialing	–
		Stops voice dialing	–

- ▶ Say the name of the person you want to call.
The mobile phone automatically dials the corresponding number.

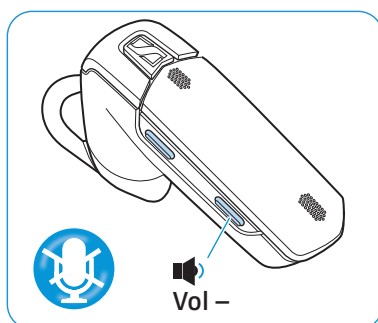
Muting the headset's microphone

To mute the headset's microphone:

- ▶ Press the volume down button for 1 second.

To unmute the headset's microphone:

- ▶ Briefly press the volume down button.



Cleaning and maintaining the VMX 200

CAUTION

Liquids can damage the electronics of the product!

Liquids entering the housing of the device can cause a short circuit and damage the electronics.

- ▶ Keep all liquids far away from the product.
 - ▶ Do not use any cleansing agents or solvents.
-

Cleaning the headset

- ▶ Only use a dry cloth to clean the product.

Storing the headset

If you do not use the headset for extended periods of time:

- ▶ Charge the built-in rechargeable battery every 6 months for about 1 hour.
- ▶ Store the headset in a clean and dry environment.

If a problem occurs ...

Problem	Possible cause	Possible solution	Page
Headset cannot be switched on	The rechargeable battery is flat.	Recharge the rechargeable battery.	9
No audio signal	The headset is not paired with the mobile phone.	Check if the headset is paired. If necessary, pair the headset with the mobile phone again.	14
	The volume is adjusted too low.	Increase the volume.	15
	The headset is switched off.	Switch the headset on.	14
Headset cannot be paired	The pairing does not work.	Check if the your Bluetooth device supports the HF or HS profile.	–
	The mobile phone is switched off.	Switch the mobile phone on.	14
Headset does not react to any button press	The operation of the headset is faulty.	Reset the headset to the factory default settings.	20

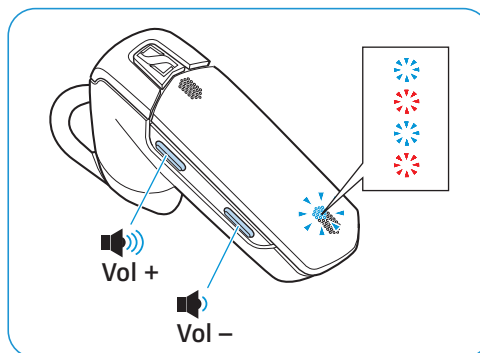
If a problem occurs that is not listed in the above table or if the problem cannot be solved with the proposed solutions, please contact your local Sennheiser partner for assistance.

To find a Sennheiser partner in your country, search at www.senncom.com.

Restoring factory default settings (Reset)

You can restore the following settings to their factory default settings:

- list of paired **Bluetooth** devices (afterwards empty)
- ▶ Set the headset to pairing mode (see page 10). The LED flashes alternately blue and red, indicating that the headset is in pairing mode.
- ▶ Simultaneously press and hold the volume up button and the volume down button for 3 seconds.



If you are out of the Bluetooth transmission range

Calling is only possible in the **Bluetooth** transmission range of the mobile phone. The transmission range largely depends on environmental conditions such as wall thickness, wall composition etc. With a free line of sight, the transmission range of most mobile phones and **Bluetooth** devices is up to 10 meters.

If the headset leaves the **Bluetooth** transmission range of the mobile phone:

- The sound quality deteriorates before the connection finally breaks down.
- Your mobile phone displays the loss of connection.
- Please refer to the instruction manual of your mobile phone for information on whether the call is automatically transferred to the mobile phone or requires an acknowledgement to do so.

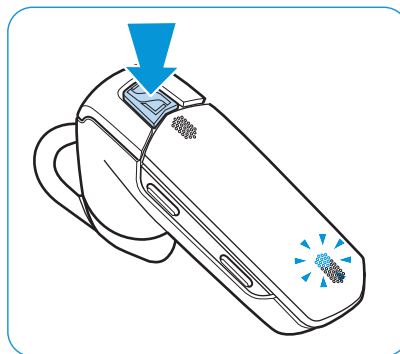
Manually re-establishing Bluetooth connections



When the headset is disconnected from the **Bluetooth** device, the LED flashes blue once every 2 seconds, indicating that the headset is in searching mode.

- ▶ Make sure that the **Bluetooth** visibility of the **Bluetooth** device is enabled.
- ▶ Press the multi-function button to re-establish the **Bluetooth** connection.

Once the VMX 200 has found the **Bluetooth** device, the devices exchange device identification information. You hear a high beep in the headset and the LED flashes blue 3 times.



Specifications

VMX 200

Dimensions	55 x 26 x 58 mm (W x H x D)
Weight without ear hook	approx. 10 g
Standby time	up to 10 days (240 hrs)
Talk time	up to 6 hrs
Charging time	before first use: 2.5 hrs following: 2 hrs
Range	10 m
Speaker type	dynamic, neodymium magnet
Microphone type	dual omni-directional electret microphone
Audio	digital noise and echo suppression
Operating temperature range	+10°C (+50°F) to +40°C (+104°F)
Operating relative humidity	20 to 85%, non-condensing
Storage temperature range	–20°C (–4°F) to +60°C (140°F)
Storage relative humidity	10 to 95%, non-condensing

VMX 200 power supply unit

Nominal input voltage	100 – 240 V~
Nominal input current	max. 0.2 A
Mains frequency	50–60 Hz
Nominal output voltage	5 V ===
Nominal output current	max. 150 mA
Operating temperature range	+10°C (+50°F) to +40°C (+104°F)
Operating relative humidity	20 to 85%, non-condensing
Storage temperature range	–20°C (–4°F) to +60°C (140°F)
Storage relative humidity	10 to 95%, non-condensing
Weight	approx. 75 g



Bluetooth



Bluetooth	version 3.0
Range	up to 10 m
Transmission frequency	2402 MHz to 2480 MHz
Profiles	HSP, HFP

Manufacturer Declarations

Warranty

Sennheiser Communications A/S gives a warranty of 24 months on this product. For the current warranty conditions, please visit our website at www.senncom.com or contact your Sennheiser partner.

In compliance with the following requirements










- RoHS Directive (2002/95/EC)
- WEEE Directive (2002/96/EC)
 -  Please dispose of this product by taking it to your local collection point or recycling center for such equipment. This will help to protect the environment in which we all live.
- Battery Directive (2006/66/EC)
 -  The product's built-in rechargeable batteries can be recycled. In order to protect the environment, please dispose of defective products with built-in rechargeable batteries as special waste or return them to your specialist dealer.

CE Conformity

- R&TTE Directive (1999/5/EC)
- EMC Directive (2004/108/EC)
- Low Voltage Directive (2006/95/EC)
- ErP Directive (2009/125/EC)

The CE Declaration of Conformity is available on our website at www.senncom.com. Before putting the device into operation, please observe the respective country specific regulations!

In compliance with:

USA	FCC ID: DMOCBMSAD
Canada	IC: 2099D-VMX200
Europe	  
Australia/ New Zealand	 N340
Singapore	Complies with IDA Standards DB100582
Russia	 ME10
Japan	  005WWCA0555
China	 CMIIT ID: 2011DJ2405  power supply unit

Statements regarding FCC and Industry Canada

This device complies with Part 15 of the FCC Rules and with Industry Canada standard(s) for licence-exempt radio devices. Operation is subject to the following two conditions: (1) this device may not cause harmful interference, and (2) this device must accept any interference received, including interference that may cause undesired operation.

This equipment has been tested and found to comply with the limits for a Class B digital device, pursuant to Part 15 of the FCC Rules and RSS 210 of Industry Canada. These limits are designed to provide reasonable protection against harmful interference in a residential installation. This equipment generates, uses and can radiate radio frequency energy and, if not installed and used in accordance with the instructions, may cause harmful interference to radio communications. However, there is no guarantee that interference will not occur in a particular installation. If this equipment does cause harmful interference to radio or television reception, which can be determined by turning the equipment off and on, the user is encouraged to try to correct the interference by one or more of the following measures:

- Reorient or relocate the receiving antenna.
- Increase the separation between the equipment and receiver.
- Connect the equipment into an outlet on a circuit different from that to which the receiver is connected.
- Consult the dealer or an experienced radio/TV technician for help.

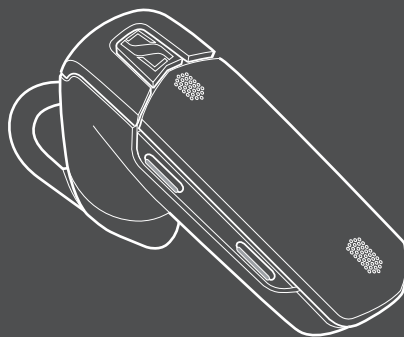
Changes or modifications made to this equipment not expressly approved by Sennheiser electronic Corp. may void the FCC authorization to operate this equipment. Before putting the equipment please observe the respective country-specific regulations!

RF Radiation Exposure Information

Since the radiated output of this device is far below the FCC radio frequency exposure limits, it is not subjected to routine RF exposure evaluation as per Section 2.1093 of the FCC rules.

Trademarks

The **Bluetooth** word mark and logos are registered trademarks owned by Bluetooth SIG, Inc. and any use of such marks by Sennheiser Communications A/S is under license.



Sennheiser Communications A/S

Langager 6, 2680 Solrød Strand, Denmark
www.senncom.com

Publ. 11/11, A02