

QUICK GUIDE

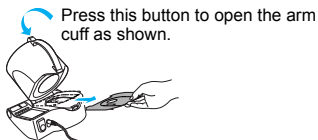
Thank you for purchasing the OMRON i-Q132 SpotArm™ Type Blood Pressure Monitor.

This sheet simply explains how to measure your blood pressure.

However, **please read the instruction manual thoroughly before using the unit.**

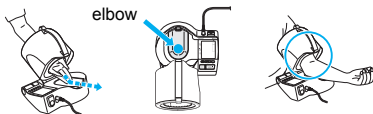
For the First Time You Use the Unit

- ▶ **Remove the cushion sheet from the elbow rest.**
- ▶ **Set the date and time** (Refer to chapter 2.3 in Instruction Manual)



1. Place your arm through the arm cuff.


(Refer to chapter 3.2)

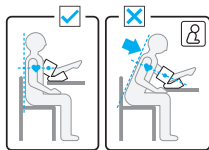


2. Check your sitting position.

(Refer to chapter 3.1)

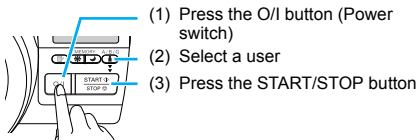
Correct posture during measurement is necessary to get accurate results.

* If you are not sitting correctly, the  symbol appears on the display.



3. Start measurement.

Follow the steps (1) to (3)
(Refer to chapter 3.3)



Important:

If inflation does not stop when the O/I, START/STOP or any other button is pressed,

Press the emergency deflation switch on the back of the unit.

Note: The clock will also stop if you press the emergency deflation switch. Reset the date and time.

