



English

Français

Deutsch

Español

Italiano

中文

日本語

한국어

العربية

NATIVE UNION

"Play"

Instruction Manual
 Manuel d'utilisation
 Bedienungsanleitung
 Manual de instrucciones
 Manuale di istruzioni
 使用手册
 取扱説明書
 사용 설명서
 دليل التعليمات



WELCOME

"Play" Multi-Message Video Memo Pad
Designed by Fabien Nauroy



- Standby time : up to 45 days with messages,
up to 6 months without messages



- Play time : Up to 4 hours



- Multi-message



- Video recording up to 180 seconds



- Magnetic back



- Time and date of messages



- 2.4" diagonal screen



- No computer needed

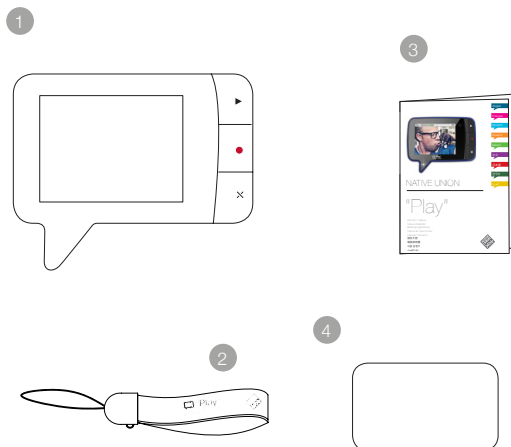


- User friendly



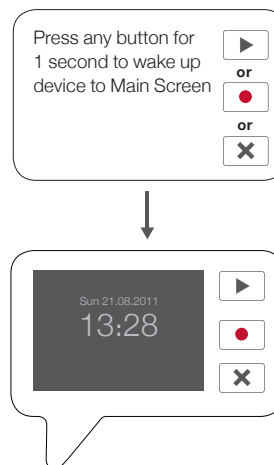
- LED message indicator

WHAT YOU GET IN THIS PACKAGE



- 1 "Play" Multi-Message Video Memo Pad
- 2 Strap to keep your "Play" safe at hand
- 3 Instruction manual
- 4 Magnetic sticker plate

MAIN SCREEN FUNCTIONS



Enter "RECORD" mode



Enter "PLAY" mode



Press and hold for 3 seconds
Back to Sleep mode (notification sound)

Device will go to standby when idle for 15 seconds
Device will go to sleep when idle for 2 minutes

HOW TO USE "Play" - RECORD mode



Enter "RECORD" mode from Main Screen



Start recording after countdown
(notification sound)

Any key press during countdown will cancel the operation



Exit "RECORD" mode and back to main
screen

While recording



Delete message without saving



again to confirm delete
(notification sound)



to save message



Stop recording and save message
(notification sound)

White LED will start blinking until all new messages are viewed
Notification will show when total duration of messages reaches 180
seconds
Device will go back to main screen if idle for 6 seconds

HOW TO USE "Play" - PLAY mode



Enter "PLAY" mode from Main Screen



Play current message shown on screen



Skip to next message

double press



Delete current message shown on screen



again to confirm delete
(notification sound)



to cancel delete



press and hold
3 seconds

Delete ALL messages on device



again to confirm delete
(notification sound)



to cancel delete

While playing



Pause the current message



again to resume



Delete current message



again to confirm delete
(notification sound)



to cancel delete

White LED will stop blinking when all new messages are viewed
Device will go back to main screen if idle for 6 seconds

HOW TO USE "Play" - DATE/TIME setup

While in SLEEP mode



Enter "DATE/TIME" setup

simultaneously hold 9 seconds



While in DATE/TIME setup



To cycle through each setting parameter



To adjust the figure of the underlined parameter



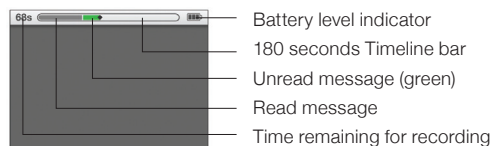
Save current settings (notification sound)

Press 2 seconds



Exit without saving settings

HOW TO USE "Play" - USER INTERFACE



BATTERY LEVEL INDICATOR



100% -> 60%



60% -> 20%



20% -> 5%



5% -> 0%



MESSAGE RECORDED

Duration of recorded message

Date and time of recorded message



CURRENT MESSAGE

Duration of current message

Date and time of message



DELETE CURRENT MESSAGE

Duration of the message to be deleted

Date and time of the message to be deleted



DELETE ALL MESSAGES

Total number of messages to be deleted

Total duration of all messages to be deleted

SPECIFICATIONS

- Record time
180 seconds
- Camera pixels
0.3M VGA CMOS Camera
- LCD monitor
2.4 inches
- Screen resolution
TFT LCD 320(RGB) x240
- Sleep mode
Standby when idle for 15 seconds,
Auto power off after 2 minutes
- Battery type
Requires 3 X AAA batteries (not included)
- Visual angle
68 degree
- Standby mode:
up to 45 days with messages,
up to 6 months without messages.
(based on 3 X AAA alkaline battery 1250mAH)
- Record mode:
up to 6.5 hours, based on 3 X AAA
alkaline type battery (1250mAH)
- Play mode
up to 4 hours, based on 3 X AAA
alkaline type battery (1250mAH)
- Memory Size
256Mb SDRAM
- Record file format
AVI
- Built-in microphone and speaker
- Magnet in the back panel
- LED Message indicator

FCC COMPLIANCE STATEMENT

This device complies with Part 15 of the FCC Rules. Operation is subject to the following two conditions: (1) this device may not cause harmful interference, and (2) this device must accept any interference received, including interference that may cause undesired operation.

Changes or modifications not expressly approved by the party responsible for compliance could void the user's authority to operate the equipment.

NOTE: This equipment has been tested and found to comply with the limits for a Class B digital device, pursuant to Part 15 of the FCC Rules. These limits are designed to provide reasonable protection against harmful interference in a residential installation. This equipment generates, uses and can radiate radio frequency energy and, if not installed and used in accordance with the instructions, maybe cause harmful interference to radio communications. However, there is no guarantee that interference will not occur in a particular installation. If this equipment does cause harmful interference to radio or television reception, which can be determined by turning the equipment off and on, the user is encouraged to try to correct the interference by one or more of the following measures:

- Reorient or relocate the receiving antenna.
- Increase the separation between the equipment and receiver.
- Connect the equipment into an outlet on a circuit different from that to which the receiver is connected.
- Consult the dealer or an experienced radio/TV technician for help.



Disposal of old electrical and electronic equipment:

After the implementation of the European Directive 2002/96/EU in the national legal system, the following applies:

Electrical and electronic devices may not be disposed of with domestic waste.

Consumers are obliged by law to return electrical and electronic devices at the end of their services lives to the public collecting points set up for this purpose or point sale. Details to this are defined by the national law of the respective country. This symbol on the product, the instruction manual or the package indicates that a product is subject to these regulations. By recycling, reusing the materials or other forms of utilizing old devices, you are making an important contribution to protecting our environment.